

Friday 16th July 2021

Dear Parents and Carers,

Arrangements for September 2021

We are nearing the end of a challenging year for all members of the school community. The end of the year has not been what we had hoped for but we do look forward to a fresh start in September for everyone.

- Children in Y1 – Y6 will return to school on Monday 6th September.
- Children in Nursery and Reception will be following an induction plan for the first two weeks to help them settle into Woodlands.

Our theme for next year is to ‘Get back on track’ at Woodlands



We aim to reintroduce those aspects of our curriculum that we have missed so much, such as: Educational visits, extra-curricular activities, class assemblies, swimming lessons, performances and to get Woodlands singing again – as long as it is safe to do so and we follow all government guidance.

School arrangements in terms of Covid

The government has published guidance in terms of covid which suggests that many current requirements can be lifted from September. We will be going a little slower at Woodlands and not lifting all of our control measures until we are sure that it is safe to do so.

Therefore, for the time being:

- Children will remain in year groups as family groups, the only time they will ‘mix’ is when they are on the playground in the fresh air. Even then it will only be two year groups at a time, at least to start with.
- Lunchtimes and break times will continue to be staggered.
- The full lunch hour will be back and so the afternoon break will end.
- Entry and exit times will retain an element of staggering.

- We will keep a one-way system onto the front of the school site and out through the car park. Vehicles will not be moving at these times.
- Good levels of ventilation will continue.
- High levels of hand hygiene, hand washing and hand sanitising will continue.
- Staff will continue to wear masks in communal areas around the school, but not in learning rooms.
- Children will continue to have their own stationary packs in school and own trays for their equipment.
- Children will sit in groups, particularly in the lower years to support levels of communication and focus on oracy skills.

Reducing the risk of infection

It is essential that unwell children or unwell parents do not enter the school site. If anyone in your household displays any of the covid symptoms, then it is important that you do not send your child/ren into school whilst they access the test and please keep us updated as to the result.

It is going to be difficult to distinguish between viruses as we enter the cough and cold season, but according to guidance we shall be ringing parents to ask them to come quickly to take home any child that becomes unwell during the school day.

Track and Trace Requirements in September

It has been indicated that whole year groups will not need to isolate if there is a positive case, instead close contacts will be identified that will need to isolate; children that sit on the same table or friends of the positive case.

Although, parents need to be aware that this will not be possible for Nursery and Reception Children because they learn in a very different way, if there is a positive case then it is likely that the whole year group will need to isolate.

Positive Test Results

If any child or member of staff receives a positive test result, then we shall contact Public Health in order to undertake a risk assessment of who has been in close contact with the affected person.

The parents of these children will be contacted and asked to come and collect their child and they will need to stay at home for the period of isolation.

Entry and Exit Times

Nursery to Y4 will enter school through the front entrance. We shall keep a one-way system so that parents will enter through the pedestrian gate up to the KS1 playground where they can wait, and then leave through the front car park. Y5 and Y6 will enter school through the back entrance off Bloxwich Road North. No vehicles will move on site during entry and exit times.

The front pedestrian gate will open at 8:30, school doors will open at 8:40 and close at 8:55. Children will be marked as late from 8:55

The back gate will open at 8:40 and close at 8:50

Year Group	Entry into school	Exit from school
Nursery	8:30 – 8:35 12:30 – 12:35 Nursery Ramp	11:30 3:30 Nursery Ramp
Reception	8:40 – 8:50 EYFS outdoor space	3:10 Reception doors in EYFS outdoor space
Y1	8:40 – 8:55 KS1 playground, lower doors	3:10 KS1 playground, lower doors
Y2	8:40 – 8:55 KS1 playground, lower doors	3:10 KS1 playground, upper doors
Y3	8:40 – 8:55 KS1 playground, upper doors	3:20 KS1 playground, upper doors
Y4	8:40 – 8:55 KS1 playground, upper doors	3:20 KS1 playground, upper doors
Y5	8:40 – 8:50 Back Entrance through KS2 playground	3:20 KS1 playground, lower doors
Y6	8:40 – 8:50 Back Entrance through KS2 playground	3:20 KS1 playground, lower doors

School Dinners for children in Y3 – Y6

Please remember that Universal Free School Meals only apply up to Year 2.

Therefore, if your child is moving from Year 2 up to Year 3 and requires a school lunch then this will need to be booked and paid for on Scopay. Alternatively, your child could instead bring a packed lunch.

The cost of a hot lunch from September will be £2.30

It is really important that parents pay and order their child's school lunch 24 hours before the day so the ingredients are ordered for the correct number of meals.

We have had a number of issues when meals haven't been ordered or paid for until the day and then we don't have enough hot meals for the children on that day.

Therefore, in order to ensure that there is a hot lunch for your child, parents must

place money in their Scopay account, and then order the meal 24 hours prior to the day. If the order is placed too late then we shall contact you and ask you to bring a packed lunch for your child, for that day.

School Uniform

After such a difficult year when shops have been closed and our uniform expectations have altered due to the needs of covid we want to get our Woodlands uniform 'back on track' from September.

We are very proud of our uniform at Woodlands because it brings us together as a family and helps the sense of belonging for every child.

I have attached the uniform policy to the bottom of this letter so that it can help you in your summer shopping for uniform and school shoes. When school shoes are so expensive it is important to ensure that they are the right purchase so we hope the policy will help in these decisions.

Children are able to wear either the summer uniform or winter uniform when they return in September, up until October half term. If your child chooses to wear a shirt with a collar, then they will also need to wear the school tie.

Children will wear uniform five days a week from September and change into their PE kits at school for PE lessons. Therefore, children will need to bring in their PE kits and keep them in school for the half term.

I recently went through the lost property in the hope that I would be able to return school jumpers to their owners. I was unable to do this because there was a lack of names in the items. I can recommend name labels that you stick onto items of clothing, they are quick to stick on and go through the washing machine numerous times. (Stikins by labelplanet are great)

We thank our parents who support us in keeping our school uniform expectations high.

Finally

It is difficult to plan ahead when we don't know what September will bring in terms of covid, but the safety of the children and staff are our first priority. We shall continue to follow all government guidance and keep you updated as to the changes.

Key items to remember for September:

- Check what time to arrive at school and plan to be on time.
- Children to wear school uniform every day of the week. Please see the policy at the end of this letter. Hair to be tied up and no jewellery. Label all items with your child's name.
- Children to bring their PE kits into school
- Children to bring in a water bottle, no pre-bought drinks

- Children in KS2 to bring in a healthy snack for tuck
- Toast will continue for children who are free school meals at 8:55
- Children and parents who are unwell to not enter the site
- Children who become unwell during the day will be sent home
- Don't forget to return your child's inhaler if they need one and complete the form available from the office
- If child requires a hot lunch, then please remember to book 24 hours before

If you have any questions or worries then please email postbox@woodlands.walsall.sch.uk. We shall respond but please be aware that staff will be taking holidays and so this may take a couple of weeks.

The final newsletter of the year will be posted next week.

Yours sincerely,

T G Newton

Headteacher

Uniform Policy is attached below



The Woodlands School Uniform

At Woodlands Academy of Learning we dress for learning! We strongly promote school uniform and have high expectations which foster a sense of pride and a sense of belonging. We are very proud of our uniform which is in our school colours of green and grey.

In the school office, we sell a number of the items with the school logo on, they can be ordered and paid for through Scopay, there is also a stall on Willenhall market that sells Woodland's uniform.

Autumn & Spring Term

Girls:

White buttoned shirt
Woodlands School tie
Grey skirt of an appropriate length or pinafore dress or grey tailored trousers
Bottle green V neck sweatshirt or cardigan with Woodlands logo (style shown in picture)
White/grey socks or green/grey tights
Black, flat school shoes with a closed toe & fastenings that the children can manage



Boys

White buttoned shirt
Woodlands School tie
Grey trousers
Bottle green V neck sweatshirt with Woodlands Logo (style shown in picture)
Grey socks
Black school shoes with fastenings that the children can manage



Optional Summer Uniform

The Summer Term and the 1st half of the Autumn term.

Girls

Green and white checked summer dress
White buttoned polo shirt

Boys

Grey tailored shorts
White buttoned polo shirt

All other items as above.



P.E. Uniform

Plain coloured t-shirt (according to house colour)
Black 'football style' shorts (no lycra)
Clean trainers or black pumps (slip on or Velcro)
Plain navy blue sweatshirt with Woodlands logo



Alternative kit for colder weather

Girls: plain navy blue / black leggings or plain navy blue joggers (no brand logos). If girls are wearing tights they will also need a spare pair of socks in their PE kit.

Boys: plain navy blue joggers (no brand logos) or black base leggings under school shorts.

Swimming Kit

Swimming trunks for the boys (no shorts)
One-piece swimming costume for the girls
Swimming hat
Towel



Nursery children should wear the above uniform, but may wear a plain white polo top instead of a shirt.

School Shoes

It is vital that your child has comfortable shoes which cover their feet properly while they are at school. We also expect them to be super smart! We do not allow the children to wear trainer-type school shoes – even those sold in Clarks!



Trainers with sports logos such as Converse, Adidas or Nike or those made to replicate these brands are not permitted even if they are entirely black.



Children are not permitted to wear any shoes with open toes, sandals or heeled shoes/boots. Our children spend time running, jumping, crawling and playing with their friends, their shoes must be suitable for this to prevent accidents.



Unfortunately, if you do send your child to school in unsuitable footwear, they will be asked to change into black school pumps and we will contact you to ask that you provide suitable school shoes as requested.

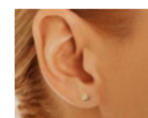


Sturdy, robust, leather shoes that can be polished, with fastenings that your child can manage independently are the best ones you can buy – see the examples below:



We also ask that you do not purchase or send your child with:

- x Playsuits – they're just not practical for toilet visits!
- x Trainers, canvas shoes or shoes with heels
- x Lycra or bootleg school trousers or leggings as school trousers.
- x Jewellery – simple stud earrings for the earlobes, are the only exception to this rule and must be removed for PE. No other body piercings. Watches are permitted for KS2 children, although watches that are a form of communication or take photographs are not allowed
- x Nail varnish or false nails
- x Large colourful hair accessories including bows – any accessories must be small and green.
- x Extreme hairstyles including shapes/patterns/logos cut into hair or hair dyed a vivid colour or extensions. Tying long hair up is always much more practical for our busy bees and must be tied up for swimming, PE and some craft / science lessons



Feedback from our parents about our school uniform has always been positive and visitors or people in the community who see our children out and about never fail to comment about how smart and well-presented our children are – this makes us all very proud! We thank all parents who support us in keeping our standards high.

**One last thing..... Our most important item of uniform that you will see every member of the Woodlands family wearing is a SMILE!
At Woodlands, you're never fully dressed without a smile!**